

ORTHOTICS MACHINERY



GRINDING MACHINES

VACUUMS

THERMOFORMING

VACUUM BAGS

Passion for Quality



“ When you choose Namrol,
you choose something more than
a orthotics equipment.

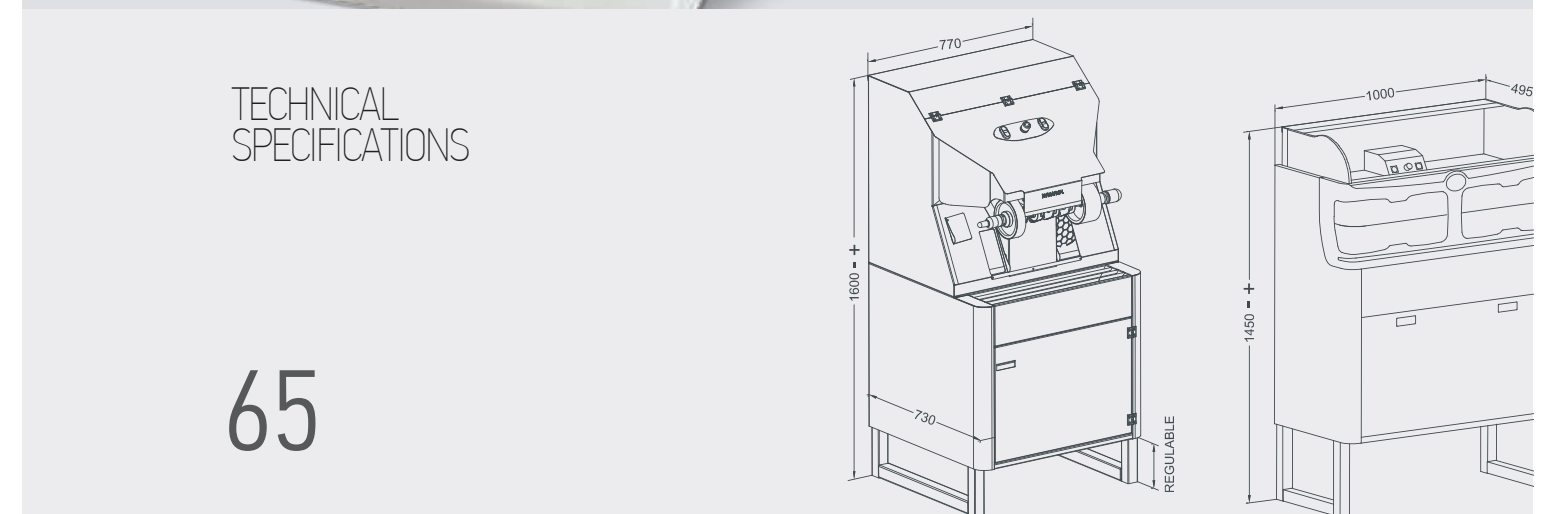


Our designers and engineers work together with a common goal, to **manufacture** the most prestigious and reliable equipment. This has made Namrol one of the **leading international companies** in the **orthotics machinery** sector.



Namrol, more than two decades producing professional orthotics machinery of highest quality.

INDEX





ALL FOR THE FOOT ORTHOTICS PRODUCTION

They represent the evolution and maturity of successful products, constantly updated, with a high degree of reliability and quality.

GRINDING MACHINES

A NEW STANDARD IN GRINDING SYSTEMS

The new generation is the result of more than 20 years of experience in the manufacture of grinders. **Feel the difference!**

The outstanding feature of Namrol grinders is the use of maintenance-free alternating current motors, which guarantees a longer life and high profitability. You can choose among 6 models with different powers, structures and configurations.



GRINDTEC

HIGH PERFORMANCE FOR HIGH PRODUCTION

Grindtec is the new grinder with sanding belt, whose performance and quality are added to outstanding maneuverability and power characteristics, supporting excellent operational comfort in all types of polishing, even the most delicate.





Control panel

Easy and fast, push buttons adapted to the work of the workshop, with activation and stop of the grinding motor and the suction system. It includes an emergency stop.



100% suction

The system of sliding flaps allows to select the suction mouth closest to our work area. This contributes to a greater use of the suction capacity.



High filtration

The rear bag allows a large air flow while maintaining a high filtration of dust particles, which will be deposited in a removable waste drawer.

PERFORMANCE AND RELIABILITY

Its powerful **2-hp motor with two sanding belts**, two accessory holders and its high-performance turbine suction system guarantee high-level performance against any type of requirement in all areas of the insole manufacturing workshop.



Removable tray

The frontal tray is easily removable for easy emptying and cleaning.

Easy access

The frontal panel is foldable for a better access to the sanding belts and facilitates their exchange.

Collection of dust

Airtight dust collection drawer with removable tray for easy cleaning.

EXCELLENCE

Today **efficiency and quality** are essential factors for any orthopedy or podiatry workshop. Grindtec is the reference in grinders, thanks to its ample working space and high suction flow.

GRINDCAB

POWER AND SILENCE COMBINED

With a work system without suction but with the same high performance as models with suction. It allows to work in an environment free of dust and noise.





Digital touchpad

The new digital touchpad makes the operation of functions more efficient and intuitive.



Brush system

The frontal system with upper and lower brushes allows a better movement during the polishing phase and a better entry and exit of the hands to and from the work area.



Collection of dust

Easy access frontal door to the dust collection bag.

PANORAMIC VIEW

Grindcab includes a curved glass protection system. This together with the **LED lighting** system provides a panoramic view of the working area.



Easy access

The glass dome is foldable for facilitating the cleaning of the grinding area. The glass incorporates an anti-static treatment that reduces the adhesion of dust particles.



Performance and reliability

A powerful 1-hp engine guarantees high level performance.

JUST DIFFERENT

Grindcab is just different, with an **unmistakable and attractive design** that makes it stand out from the rest. Designed for optimizing spaces and adapting to different grinding modes.

PULICAB



FUNCTIONALITY AT WORK

With a working system without suction but with the same characteristics and high performance than the models with it. It allows you to work in a dust-and noise-free environment.



PANORAMIC VIEW

Pulicab incorporates a protection system in curved glass. This next to the **LED lighting** system provides a panoramic view of the Work field.

Performance and reliability

The wide working area allows to grind the orthotic in a single pass without changing its position.

Easy access

Frontal access door. Allows convenient access to the removable dust collection tray.

Brush system

The frontal system with upper and lower brushes allows a better movement during the polishing phase and a better entry and exit of the hands to the work area.

High performance

Its 3/4-hp motor guarantees an agile work in the grinding and finishing of the foot orthotic.

ORTOTEC

THE STANDARD IN GRINDING SYSTEMS

Ortotec establishes completely new standards in the grinding technique thanks to its wide working space and its suction with bidirectional selection of the working side.





100% suction

The system of sliding flaps allows to select the suction mouth closest to our work area. This contributes to a greater use of the suction capacity.

Easy access

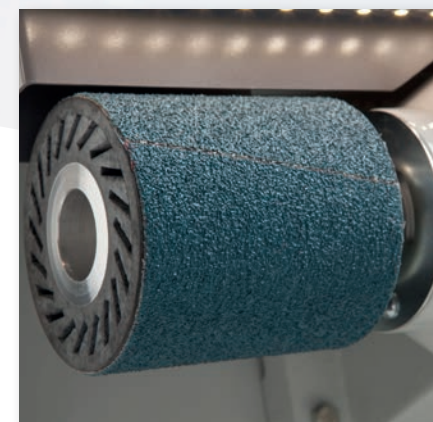
Easy opening frontal door that allows convenient access to the removable dust collection bag.

Guaranteed flow rate

Professional suction turbine ideal for its continuous use. The equipment has an antistatic system, for reducing the electrostatic charge in the dry dust suction.

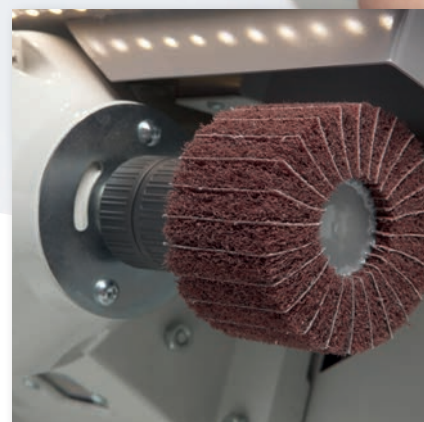
EFFICIENCY

Today efficiency and performance are essential factors for any orthopedy or podiatry workshop. Ortotec continues being the reference in compact grinders, thanks to its **wide working space** and high suction flow rate.



LED lighting

The LED lighting system is designed to increase light right where you need it most, the polishing area.



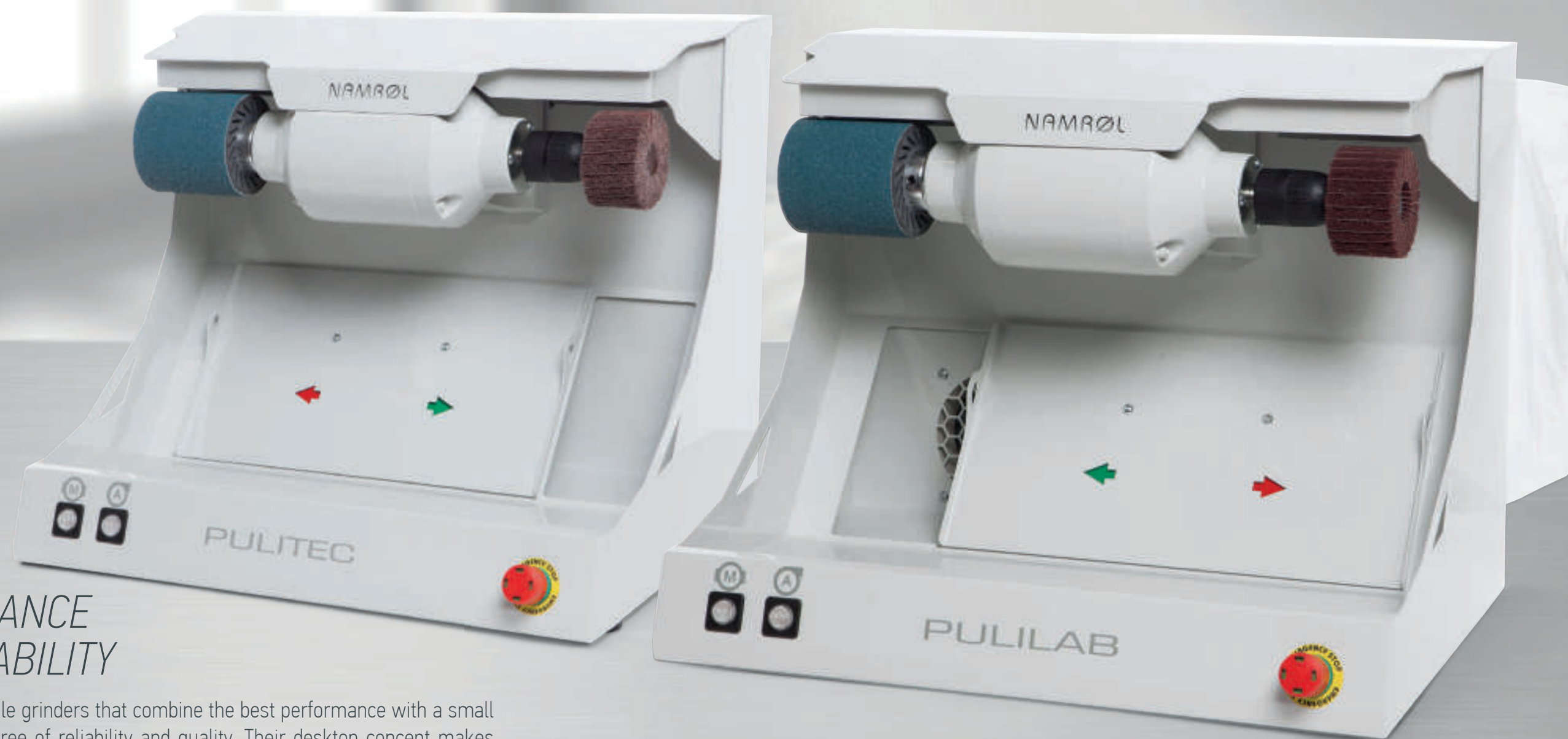
Performance and reliability

Its **1-hp motor** guarantees an agile work in the grinding and finishing of the foot orthotic. Its wide useful space allows polishing the entire orthotic in a single pass.

TOUCH-SENSITIVE CONTROL PANEL

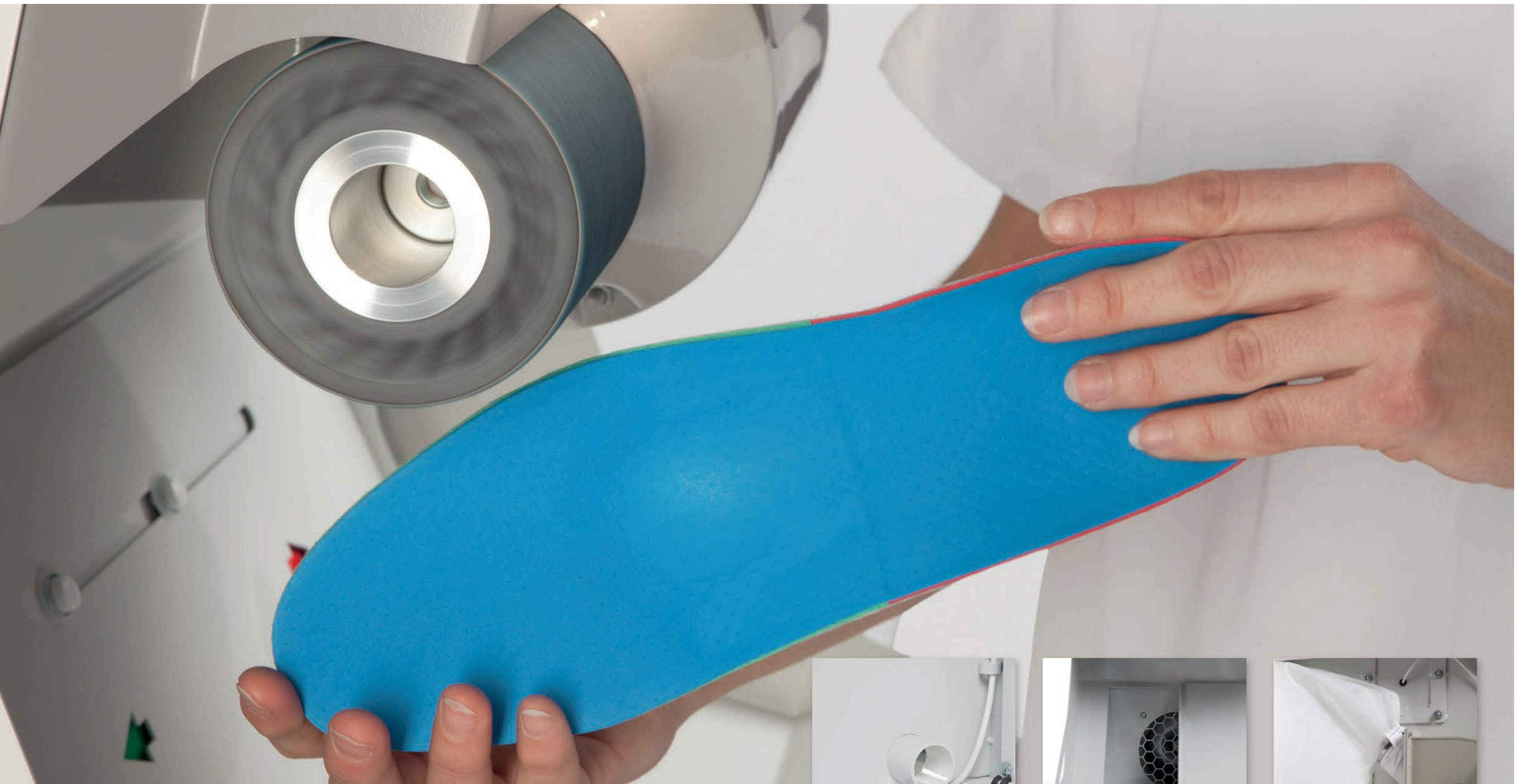
The grinding, suction and lighting functions can be displayed and selected at any time using the **extensive touch-sensitive keyboard**. The keys under the membrane allow an easy cleaning and prevent any entry of dust.

PULITEC & PULILAB



PERFORMANCE AND RELIABILITY

Compact and versatile grinders that combine the best performance with a small size and a high degree of reliability and quality. Their desktop concept makes them ideal for saving space in the workshop.



PERFORMANCE AND RELIABILITY

Its **3/4-hp motor** guarantees an agile work in the polishing and finishing of the planar supports. Its wide useful space allows polishing the entire insole in a single pass.



Pulitec
Suction connection

Pulitec incorporates an auxiliary entrance in the back for the connection of an independent vacuum cleaner.



Pulilab
Desktop concept

The desktop concept with the integrated suction system of professional turbine is the best example of the innovative capacity of Pulilab.



Pulilab
Integrated suction

Pulilab incorporates a high flow rate professional suction turbine in the rear, with a direct air circulation system and a high-capacity powder bag.

VACUUMS & THERMOFORMING

EVOLUTION AT THE SERVICE OF EFFICIENCY

The best solutions for thermowelding and thermoforming of foot orthotics. The Namrol vacuums represent the evolution of 20 years of successful units, with a high degree of reliability and quality.



VACUFORM

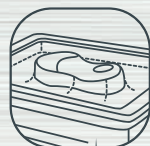


THE MOST ADVANCED VACUUM

Vacuform combines a heating and pressing plate, a digital control panel with LCD screen and two external vacuum outlets in a single compact concept.



THERMOWELDING



THERMOFORMING



DIRECT ADAPTATION IN
CORRECTED POSITION



DIRECT ADAPTATION IN
NEUTRAL POSITION



DIRECT ADAPTATION IN
DYNAMICS



Multipoint heating

The heat plate has a high quality nonstick and is made from aluminum, reinforced with titanium particles that absorbs energy to the maximum, heats quickly and distributes heat optimally throughout the work surface (360 x 270 mm.)



Intelligent control

The digital control panel with LCD screen allows total control of all functions such as: individual temperature, time and vacuum level regulation, and adjustment of the 8 work programs that it incorporates.



Accelerated cooling

Adaptable V-TWIN cooling kit, decreasing the cooling time of the insole up to 50%. (Optional)

FLEXIBILITY AND ADAPTABILITY

Thermoforming plate with high resistance silicone membrane and Unifix closing system without the need for anchoring. The **wide work surface** supports insoles up to a number 52.



HIGH-PERFORMANCE VACUUM

Vacuform incorporates an innovative "Maxpress" system based on a **high-performance vacuum pump maintenance free**, which provides optimal vacuum levels for a perfect fusion and adaptation of any type of material. It also allows the vacuum to be carried out simultaneously in the upper plate and in the external outlets.



Multiple connections

In the back, it includes two external vacuum outlets, which allow the orthotic to be molded directly on the patient's foot and the connection of vacuum cushions and other accessories of the Namrol range. The pedal allows a controlled vacuum, leaving the hands free for a more precise work.



Comfort

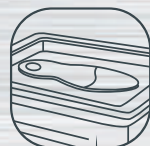
The heat plate is coated with non-stick Teflon which prevents the insoles and materials from adhering during heating and welding.

THERMOTEC

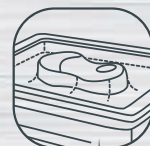


MORE TECHNOLOGICAL AND VERSATILE

Thermotec combines a heating and pressing plate, a digital control panel with LCD screen and two external vacuum outlets in a single compact concept.



THERMOWELDING



THERMOFORMING



DIRECT ADAPTATION IN
CORRECTED POSITION



DIRECT ADAPTATION IN
NEUTRAL POSITION



DIRECT ADAPTATION IN
DYNAMICS



Multipoint heating

The heat plate has a high quality nonstick and is made from aluminum, reinforced with titanium particles that absorbs energy to the maximum, heats quickly and distributes heat optimally throughout the work surface (360 x 270 mm.)



High-performance vacuum

Thermotec incorporates an innovative "Maxpress" system based on a high-performance vacuum pump without maintenance, which provides optimal vacuum levels for a perfect fusion and adaptation of any type of material. It also allows the vacuum to be carried out simultaneously in the upper chamber and in the external outlets



Multiple connections

In the back, it includes two external vacuum outlets, which allow the orthotic to be molded directly on the patient's foot and the connection of vacuum cushions and other accessories of the Namrol range. The pedal allows a controlled vacuum, leaving the hands free for a more precise work.



Intelligent Control

The digital control panel with LCD screen allows total control of all functions such as: individual temperature, time and vacuum level regulation, and adjustment of the three work programs that it incorporates.

MAXIMUM FLEXIBILITY

Pressing plate with high resistance silicone membrane and Unifix closing system without the need for anchoring. The **wide work surface** supports insoles up to a number 52.

PODOSMART

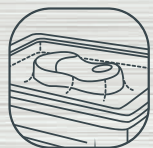


EFFICIENCY AND FUNCTIONALITY

Podosmart combines a pressing plate, a heat plate and a digital control panel in a single compact concept.



THERMOWELDING



THERMOFORMING



DIRECT ADAPTATION IN
CORRECTED POSITION



Multipoint heating

The heat plate has a high quality nonstick and is made from aluminum, reinforced with titanium particles that absorbs energy to the maximum, heats quickly and distributes heat optimally throughout the work surface (360 x 270 mm.)



High-performance vacuum

Thermotec incorporates an innovative "Maxpress" system based on a high-performance vacuum pump without maintenance, which provides optimal vacuum levels for a perfect fusion and adaptation of any type of material. It also allows the vacuum to be carried out simultaneously in the upper chamber and in the external outlets.



Comfort

The heat plate is coated with non-stick Teflon which prevents the insoles and materials from adhering during heating and fusing.



Intelligent Control

The digital control panel allows quick selection of functions: three temperature levels, three vacuum levels and four-time levels.

VERSATILITY

Pressing plate with high resistance silicone membrane and Unifix closing system without the need for anchoring. The wide work surface supports insoles up to a number 52.

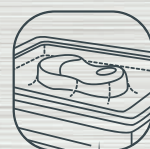
PODOTEK

HIGH PERFORMANCE FOR HIGH PRODUCTION

Thermotec combines a heating and pressing plate, a digital control panel with LCD screen and two external vacuum outlets in a single compact concept.



THERMOWELDING



THERMOFORMING



DIRECT ADAPTATION IN
CORRECTED POSITION



DIRECT ADAPTATION IN
NEUTRAL POSITION



DIRECT ADAPTATION IN
DYNAMICS





High-performance vacuum

Thermotec incorporates an innovative "Maxpress" system based on a high-performance vacuum pump without maintenance, which provides optimal vacuum levels for a perfect fusion and adaptation of any type of material. It also allows the vacuum to be carried out simultaneously in the upper chamber and in the external outlets.



Rolling version

Optionally Podotec can incorporate a frontal drawer, shelves and rolling base, ideal for movement in clinic. In the front, it incorporates two external outlets of vacuum, which allow the forming of the orthosis directly on the patient's foot and the connection of vacuum bags and other Namrol accessories.



Multipoint heating

The heat plate has a high quality nonstick and is made from aluminum, reinforced with titanium particles that absorbs energy to the maximum, heats quickly and distributes heat optimally throughout the work surface.



Intelligent Control

The digital control panel with LCD screen allows total control of all functions such as: individual temperature, time and vacuum level regulation, and adjustment of the eight work programs that it incorporates.

LARGE FORMAT

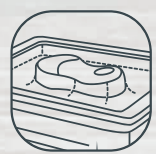
Pressing plate with high resistance silicone membrane (250°) and Unifix closing system without the need for anchoring. The **extended work surface** supports 4 insoles at the same time.

VACUTEC



A PRACTICAL VACUUM

Specially designed for working on a positive mold. Vacutec combines a pressing plate and a high-performance vacuum pump. It is available in two versions with or without external vacuum outlets.



FORMING ON POSITIVE



High-performance vacuum

Vacutec incorporates an innovative "Maxpress" system based on a high-performance vacuum pump without maintenance, which provides optimal vacuum levels for adaptation of any type of material.

Resistant and practical

Vacutec convinces with a robust construction and a long life of its components.

Comfort

Fast and economical change of latex membranes in case of breakage.

COMFORT AND FUNCTIONALITY

Vacutec performs daily tasks with **amazing flexibility**. Vacutec cannot do your job, but it can make it easier for you.

VACUUM BAGS

PRECISION AND FUNCTIONALITY

A different and precise concept in the realization of insoles, thermoformed directly on the patient's foot in a corrected position.



DIRECT ADAPTATION IN
CORRECTED POSITION





FUNCTIONALITY

With a different concept and work system, it becomes the ideal clinical companion that opens **new options and alternatives** in the production of foot orthotics.



Stabil

Platform with grab bars for better footprint take, high resistance chassis for weights up to 180 kg.



Vac-Control

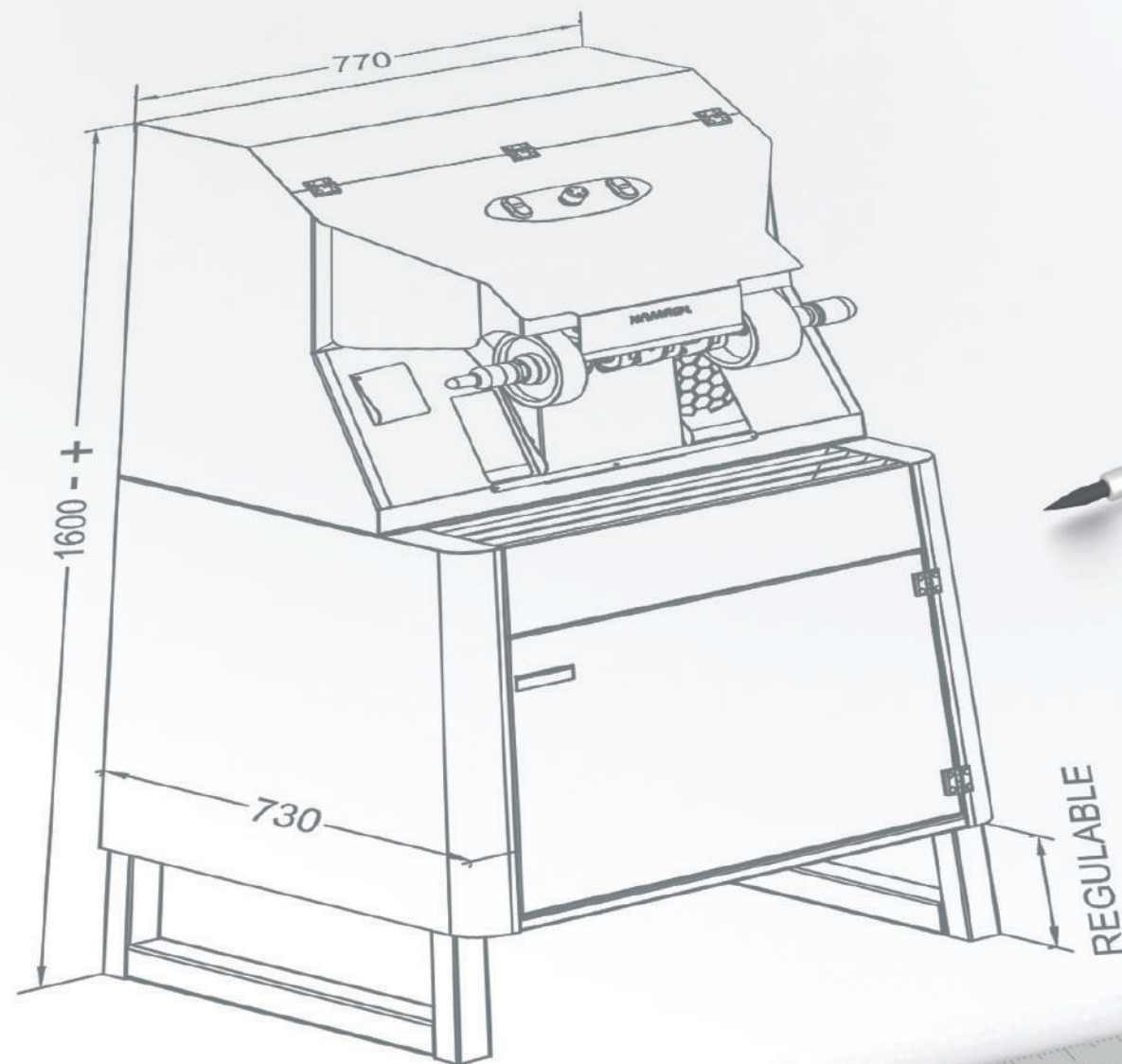
Control panel with independent controls for each cushion and vacuum speed control. It includes a silent vacuum pump without maintenance. Optional pedal



V-Print

Vacuum bag made from high elasticity silicone filled with microspheres, for setting the foot in a corrected position. and allows creating discharge areas directly on the footprint more easily.

DIMENSIONS & TECHNICAL DATA

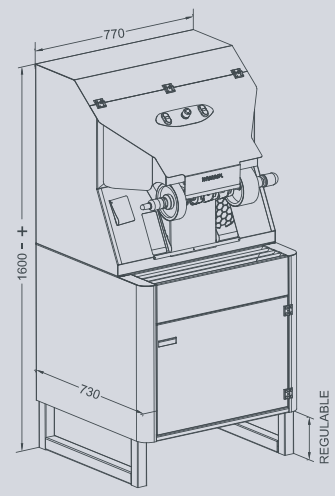


GRINDTEC

TECHNICAL DATA

- GRINDING MOTOR 2 HP / 1500 W. - 3,200 RPM
- SUCTION SYSTEM BY PROFESSIONAL TURBINE OF 2,180 M3/H
- LEFT SIDE OF THE MOTOR WITH 40 MM SANDING BAND.
- RIGHT SIDE OF THE MOTOR WITH 75 MM SANDING BAND.
- RIGHT AND LEFT SIDE OF THE MOTOR WITH AUTOMATIC ACCESSORY HOLDER

SOUND LEVEL: 71 DB.
ELECTRICAL POWER SUPPLY: 230 V. 50/60 HZ
ABSORBED POWER: 10 A.
DUST RECOVERY CAPACITY: 100 LITROS
NET WEIGHT: 120 KG.

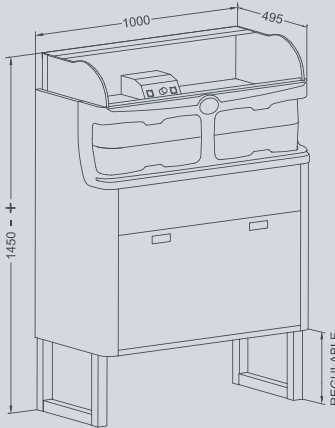


GRINDCAB

TECHNICAL DATA

- GRINDING MOTOR 1 HP / 750 W. - 3,000 R.P.M.
- LEFT SIDE OF THE MOTOR WITH EXPANDABLE DRUM WHEEL OF 100 X 90 MM.
- RIGHT SIDE OF THE MOTOR WITH AUTOMATIC ACCESSORY HOLDER

SOUND LEVEL: 50 DB.
ELECTRICAL POWER SUPPLY: 230 V. 50/60 HZ
ABSORBED POWER: 3,5 A.
NET WEIGHT: 80 KG.

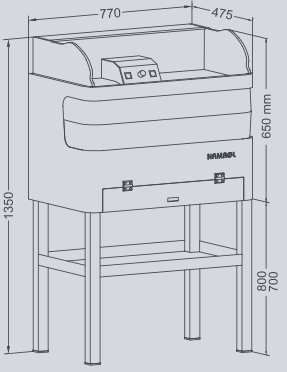


PULICAB

TECHNICAL DATA

- GRINDING MOTOR 3/4 HP / 550 W. - 3,000 R.P.M.
- LEFT SIDE OF THE MOTOR WITH EXPANDABLE DRUM WHEEL OF 100 X 90 MM.
- RIGHT SIDE OF THE MOTOR WITH AUTOMATIC ACCESSORY HOLDER

SOUND LEVEL: 50 DB.
ELECTRICAL POWER SUPPLY: 230 V. 50/60 HZ
ABSORBED POWER: 2,5 A.
NET WEIGHT: 60 KG.

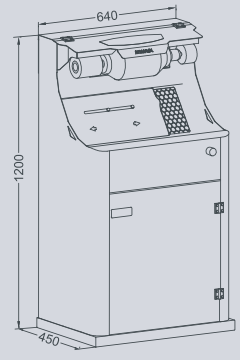


ORTOTEC

TECHNICAL DATA

- GRINDING MOTOR 1 HP / 750 W. - 3,000 R.P.M.
- SUCTION SYSTEM BY PROFESSIONAL TURBINE OF 1,500 M3/H
- LEFT SIDE OF THE MOTOR WITH EXPANDABLE DRUM WHEEL OF 100 X 90 MM.
- RIGHT SIDE OF THE MOTOR WITH AUTOMATIC ACCESSORY HOLDER

SOUND LEVEL: 69 DB.
ELECTRICAL POWER SUPPLY: 230 V. 50/60 HZ
ABSORBED POWER: 5 A.
NET WEIGHT: 65 KG.

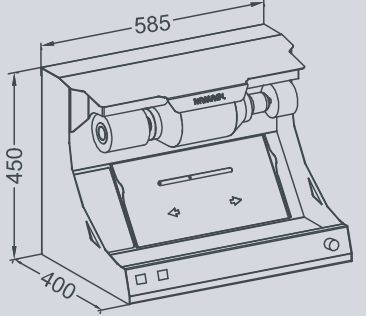


PULITEC

TECHNICAL DATA

- GRINDING MOTOR 3/4 HP - 3,000 R.P.M.
- LEFT SIDE OF THE MOTOR WITH EXPANDABLE DRUM WHEEL OF 100 X 90 MM..
- RIGHT SIDE OF THE MOTOR WITH AUTOMATIC ACCESSORY HOLDER

SOUND LEVEL: 50 DB.
ELECTRICAL POWER SUPPLY: 230 V. 50/60 HZ
ABSORBED POWER: 2 A.
NET WEIGHT: 22 KG.

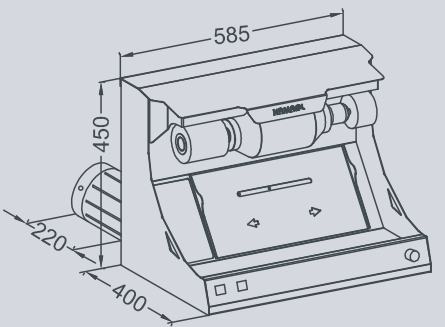


PULILAB

TECHNICAL DATA

- GRINDING MOTOR 3/4 HP - 3,000 R.P.M.
- SUCTION SYSTEM BY PROFESSIONAL TURBINE OF 2,180 M3/H
- LEFT SIDE OF THE MOTOR WITH EXPANDABLE DRUM WHEEL OF 100 X 90 MM.
- RIGHT SIDE OF THE MOTOR WITH AUTOMATIC ACCESSORY HOLDER

SOUND LEVEL: 69 DB.
ELECTRICAL POWER SUPPLY: 230 V. 50/60 HZ
ABSORBED POWER: 3,5 A.
NET WEIGHT: 32 KG.

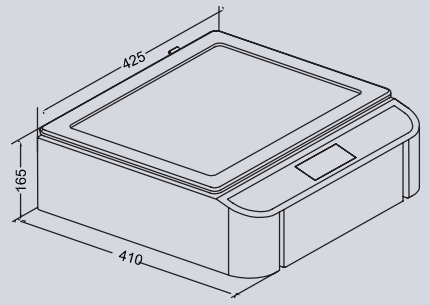


VACUFORM

TECHNICAL DATA

- WORKING AREAS 360X270 MM.

ELECTRICAL POWER SUPPLY: 230 V. 50/60 HZ
ABSORBED POWER: 4 A.
NET WEIGHT: 22 KG.

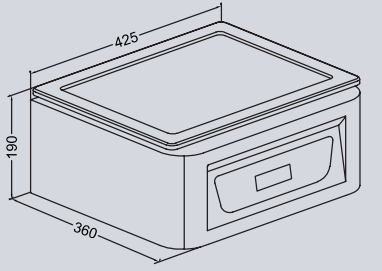


THERMOTEC

TECHNICAL DATA

- WORKING AREA 360X270 MM.

ELECTRICAL POWER SUPPLY: 230 V. 50/60 HZ
ABSORBED POWER: 4 A.
NET WEIGHT: 21 KG.

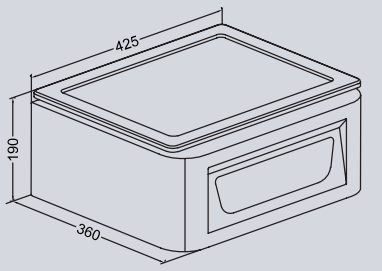


PODOSMART

TECHNICAL DATA

- WORKING AREA 360X270 MM.

ELECTRICAL POWER SUPPLY: 230 V. 50/60 HZ
ABSORBED POWER: 4 A.
NET WEIGHT: 21 KG.



VACUTECH

TECHNICAL DATA

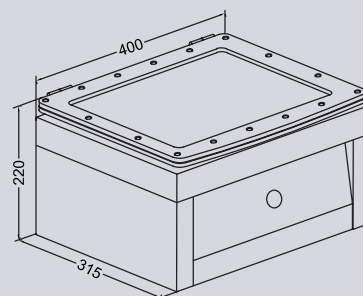
- WORKING AREA 340X240 MM.

SOUND LEVEL: 69 DB.

ELECTRICAL POWER SUPPLY: 230 V. 50/60 HZ

ABSORBED POWER: 1 A.

NET WEIGHT: 20 KG.



PODOTECH

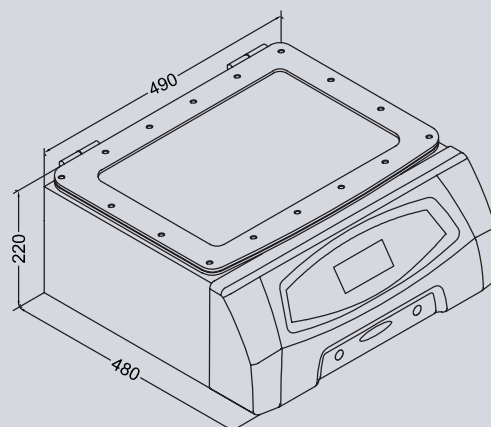
TECHNICAL DATA

- WORKING AREA 430X330 MM.

ELECTRICAL POWER SUPPLY: 230 V. 50/60 HZ

ABSORBED POWER: 5 A.

NET WEIGHT: 25 KG.



VACUUM BAGS

TECHNICAL DATA

STABIL

NET WEIGHT: 15 KG.

V-PRINT

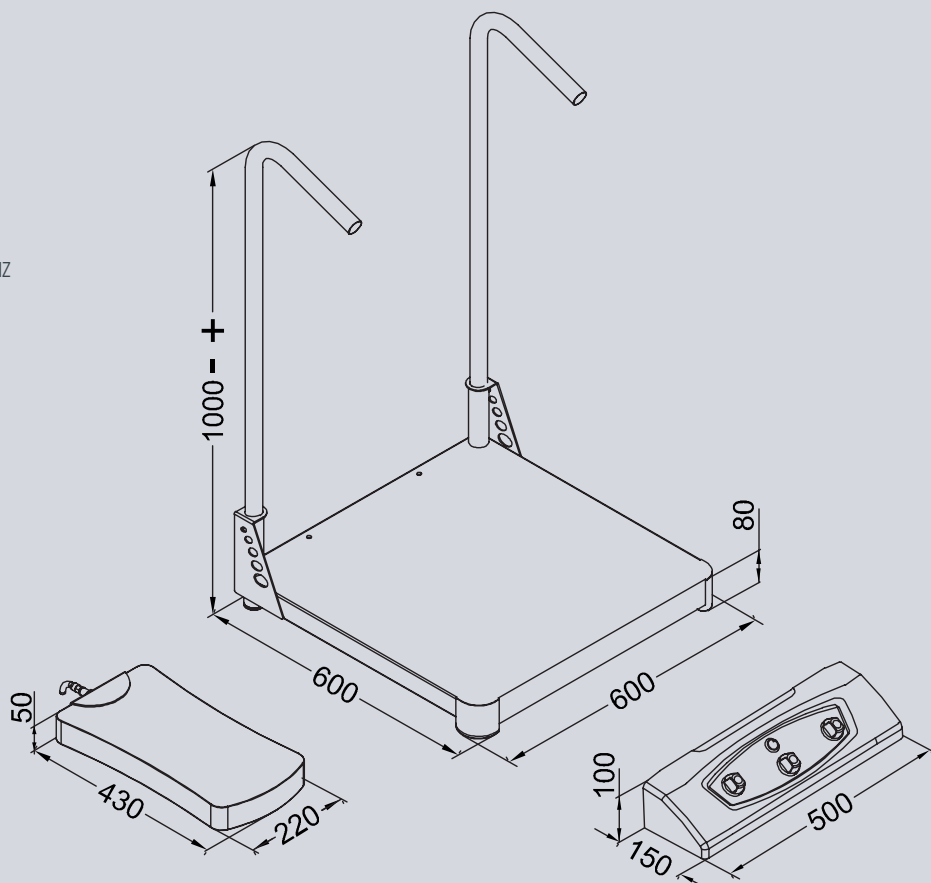
NET WEIGHT: 2,2 KG.

VAC-CONTROL

ELECTRICAL POWER SUPPLY: 230 V. 50/60 HZ

ABSORBED POWER: 1 A.

NET WEIGHT: 7 KG.



Passion for
Quality



C/ Drets Humans, 17-19. 08870 Sitges (Barcelona)
info@namrol.com +34 93 811 36 88

*We always take
care what we make* | **Namrol
After-Sales Service**

www.namrol.com
www.namrolgroup.com